



## Around Town Storytimes!

Join Read Aloud Lincoln at these places in the Lincoln area for storytimes: featuring stories, movement, music and more. All sessions are 25 minutes and begin at 10:30 a.m. on Fridays. Look for the LNKLibraries feather flag!

**June 2:** Larsen Tractor Museum

**June 9:** Memorial Stadium

**June 16:** Southern Heights Food Forest

**June 23:** Nebraska State Capitol

**June 30:** Sheldon Museum of Art

**July 7:** National Museum of Roller Skating

**July 14:** Speedway Motors Museum of American Speed

**July 21:** International Quilt Museum

**July 28:** Prairie Pines

## Why Read Aloud?

Reading aloud is a great way to increase your child's chances of success at school. It will entertain and delight them. It will strengthen the bonds between you and your child. And it is virtually free.

Sound too good to be true? Research has proven that this simple parenting technique is among the most effective. Children who are read aloud to by parents get a head start in language and literacy skills and are more prepared to go to school.

In other words, reading that bedtime story may not only entertain and soothe your child, but it will also develop vocabulary, improve the ability to learn to read and—perhaps most important of all—foster a lifelong love of books and reading.

## Library Locations

### Bennett Martin Public Library

136 S. 14th St. | 402-441-8500

#### Anderson Branch

3635 Touzalin Ave. | 402-441-8540

#### Bethany Branch

1810 N. Cotner Blvd. | 402-441-8550

#### Eiseley Branch

1530 Superior St. | 402-441-4250

#### Gere Branch

2400 S. 56th St. | 402-441-8560

#### Lied Bookmobile

Call for schedule | 402-441-8545

#### South Branch

2675 South St. | 402-441-8570

#### Walt Branch

6701 S. 14th St. | 402-441-4460

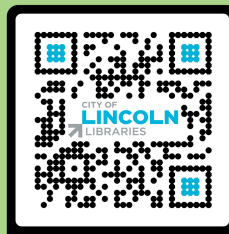
#### Williams Branch

4900 Mike Scholl St. | 402-441-8580

# Storytimes

## at Lincoln City Libraries

June–July 2023



Storytimes

[LincolnLibraries.org](http://LincolnLibraries.org)



## Babies

For children birth to 18 months. An interactive parent-child time with fun activities designed to promote early literacy, language development and a love of books.

### Eiseley Branch

Mondays, 10:35-10:55 a.m.

### Gere Branch

Mondays, 10:05-10:25 a.m.

Tuesdays, 10:45-11:05 a.m.

### Walt Branch

Tuesdays & Wednesdays, 11:00-11:20 a.m.



## Toddler Time

For children ages 18 to 36 months and parents or caregivers. Stories, songs and activities designed to support early literacy skills by building vocabulary and sharing age-appropriate stories in a fun, active, engaging environment.

### Anderson Branch

Mondays, 10:30-10:50 a.m.

### Bethany Branch

Tuesdays, 10:30-10:50 a.m.

### Eiseley Branch

Wednesdays & Thursdays, 10:35-10:55 a.m.

### Walt Branch

Tuesdays & Wednesdays, 10:15-10:35 a.m.

## Preschoolers

For children ages three, four, and five. A half-hour of books and activities that support early literacy by offering vocabulary development, experiences with a wide variety of literature, and participation in language-related activities.

### Anderson Branch

Wednesdays, 10:30-11:00 a.m.

### Bethany Branch

Thursdays, 10:30-11:00 a.m.

### Eiseley Branch

Tuesdays, 7:00-7:30 p.m.

Wednesdays & Thursdays, 10:30-11:00 a.m.

### South Branch

Wednesdays, 10:30-11:00 a.m.

### Walt Branch

Tuesdays, 10:15-10:45 a.m. - *and* - 11:00-11:30 a.m.

Wednesdays, 10:15-10:45 a.m. - *and* - 11:00-11:30 a.m.



## Music and Movement

For children 18 months to 5 years old and their caregivers. Dance, sing, play, wiggle and learn with our storytellers during this interactive storytime.

### Gere Branch

Tuesdays, 10:05-10:35 a.m.

Wednesdays, 10:45-11:15 a.m.

Thursdays, 10:05-10:35 a.m. - *and* - 6:30-7:00 p.m.

## Wee Workouts

For children two to five years old. Gets kids moving and interacting with a fun literacy component.

### Eiseley Branch

Tuesdays, 10:35-10:55 a.m.

## Mindful Movements

This preschool storytime uses mindfulness techniques and motion to develop and hone social and emotional skills. Join us for yoga, stories and more. A limited number of mats are available, but personal mats and blankets are welcome.

### Walt Branch

Tuesdays, June 8 & 22; July 6 & 13; 2:00-2:30 p.m.

## Evening Storytimes

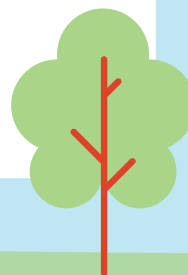
For families who need an evening opportunity to participate. Whether your kids need to shake their sillies out or wind down, evening storytimes can be just the ticket. Pajamas and slippers are optional!

### Eiseley Branch (Preschool)

Tuesdays, 7:00-7:30 p.m.

### Gere Branch (Music & Movement)

Thursdays, 6:30-7:00 p.m.



## Stay and Play

We invite children and parents to play with our developmental toys collection after our regularly scheduled Storytime. We set this time aside because research shows the importance of unstructured play for children. This time also provides caregivers the opportunity to socialize.

Look for the flower next to an event. It means you are invited to Stay and Play.



## All-Ages and Families

Children 0-8 and their caregivers are invited to join our storytellers in exploring early literacy skills like singing, playing, reading, talking and writing through books, songs, activities and more.

### Bennett Martin Public Library

Sundays, 4:00-5:00 p.m.

### Gere Branch

Wednesdays, 10:05-10:35 a.m.

Thursdays, 10:45-11:15 a.m.

### South Branch

Saturdays, 10:30-11:00 a.m.

### Walt Branch

Saturdays, 10:30-11:00 a.m.



### Williams Branch

Tuesdays, 10:30-11:00 June 6; July 11, 18 and 25



## Sensory Storytime

A storytime for children who may need a little extra attention or a more controlled environment. Geared for preschool and suited for ages 2-8.

### Eiseley Branch

Fridays, 10:15-11:15 a.m. **June 2-July 14**

### Gere Branch

Saturdays, 9:15-10:00 a.m. **June 3-July 8**

## Full STEAM Ahead

This activity-based storytime for preschoolers will challenge critical thinking and problem-solving. Read, sing about and experience Science, Technology, Engineering, Art and Math.

### Walt Branch

Tuesdays, June 15 & 29; July 20 & 27; 2:00-2:30 p.m.

